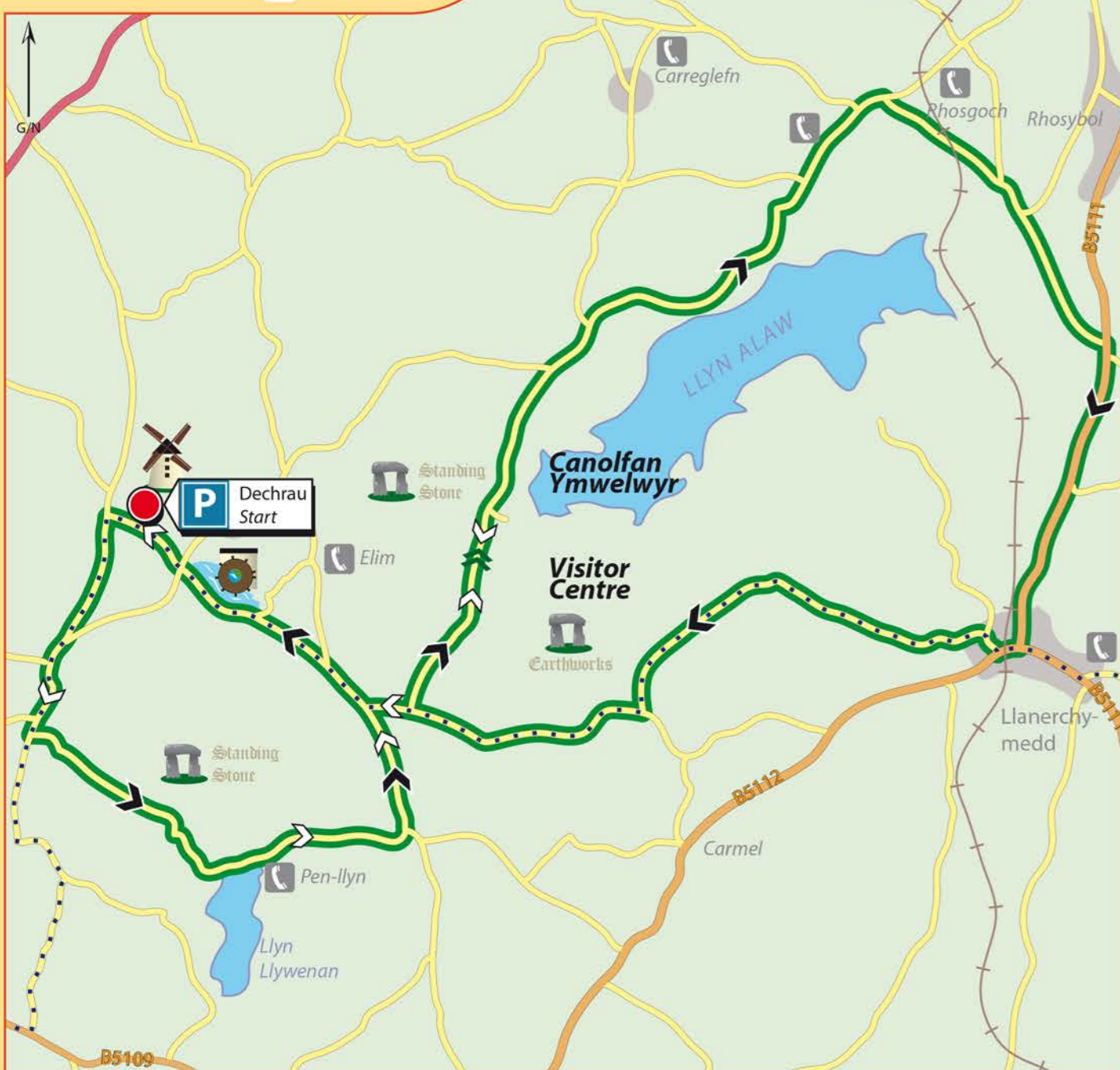


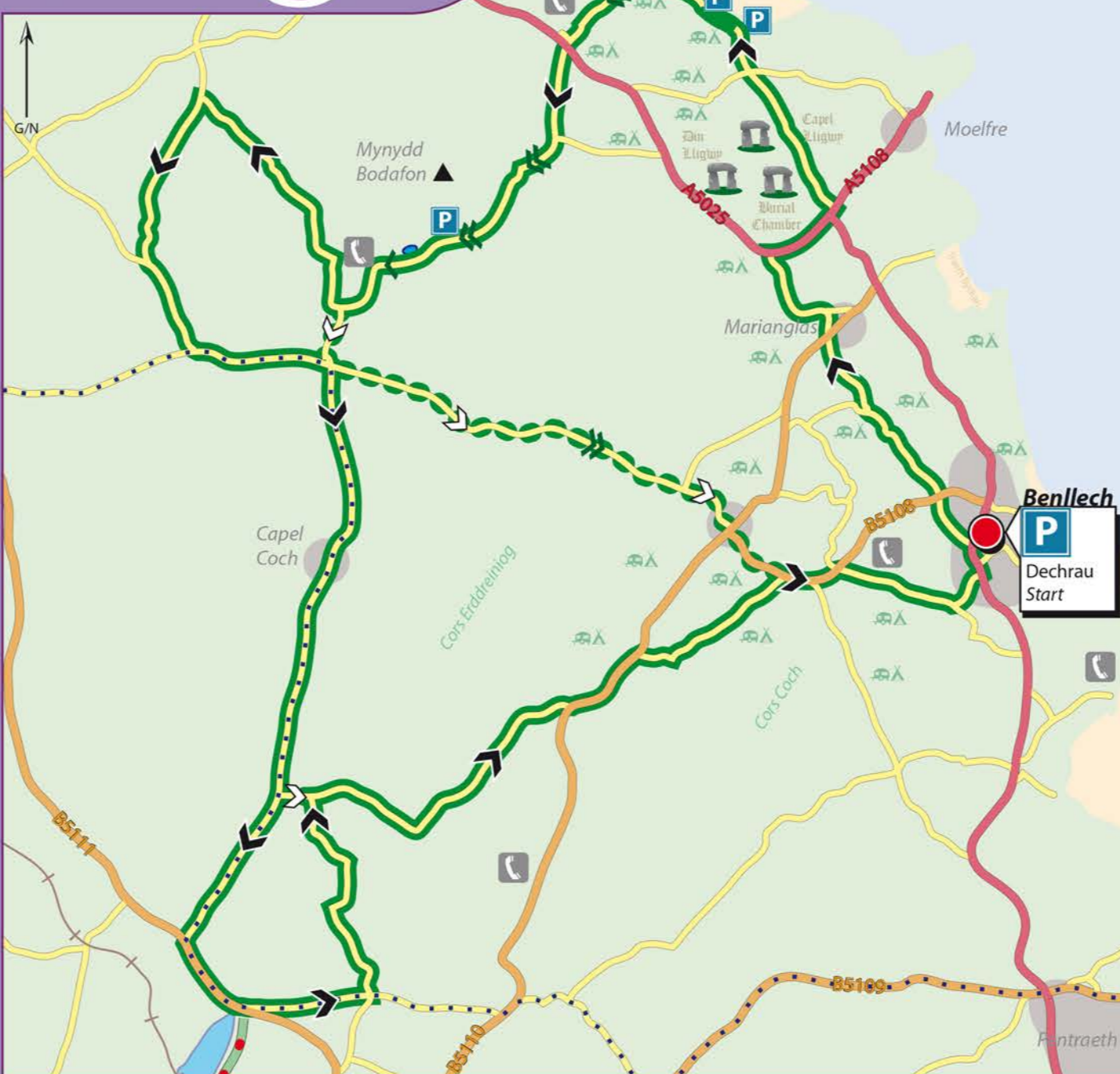
NICO 1

TAITH/TOUR

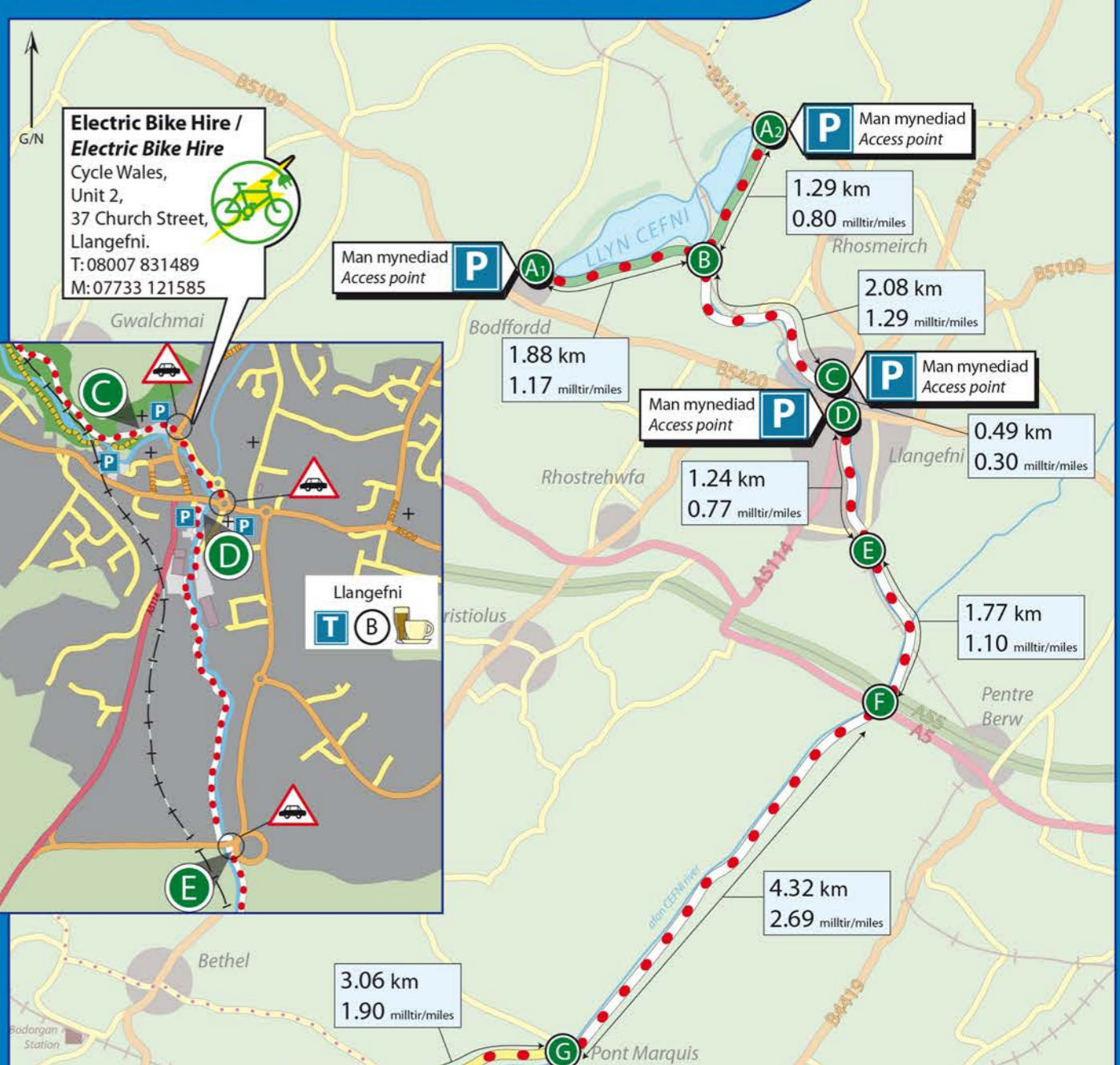


HEBOG 3

TAITH/TOUR

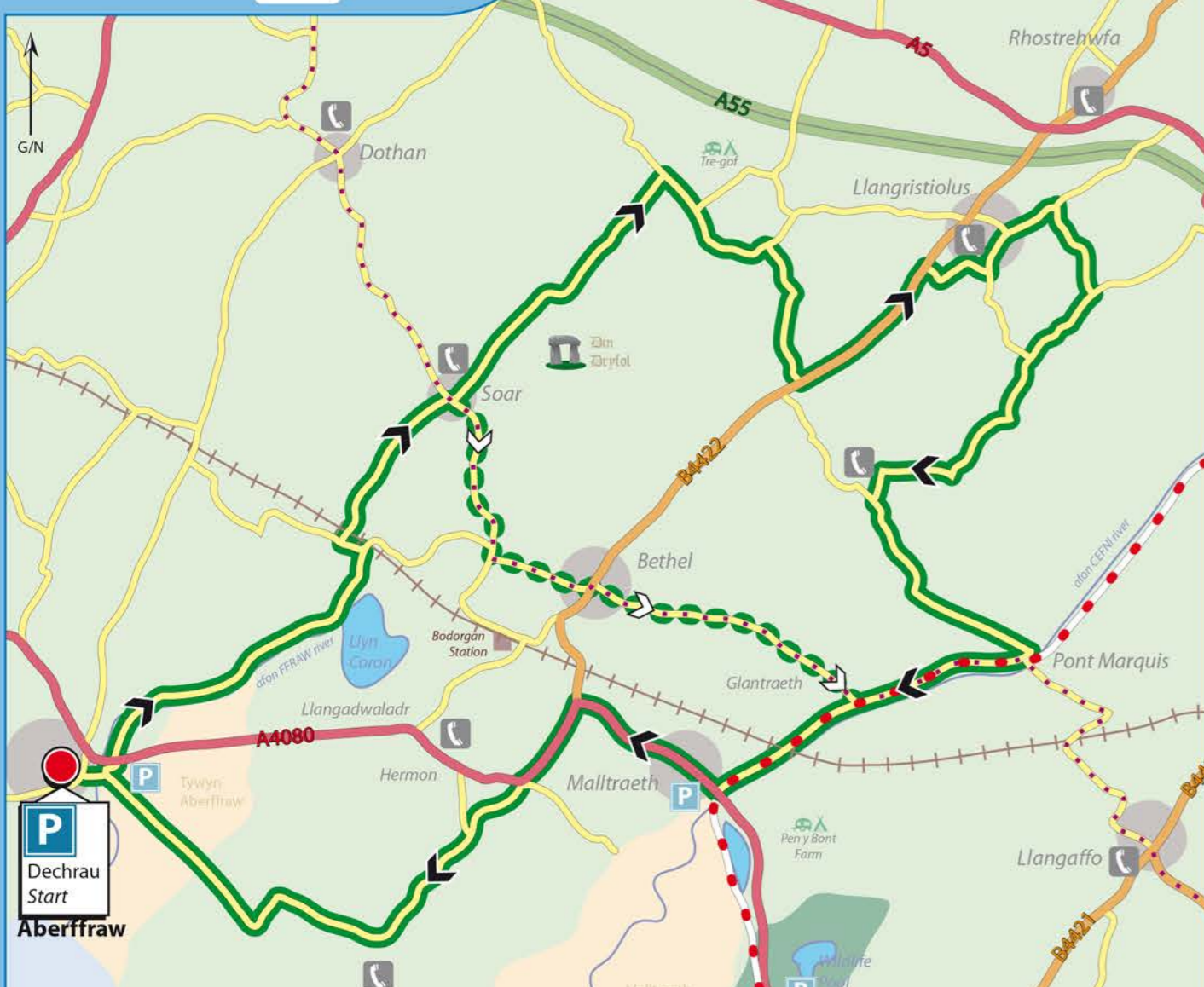


LÔN LAS CEFNI



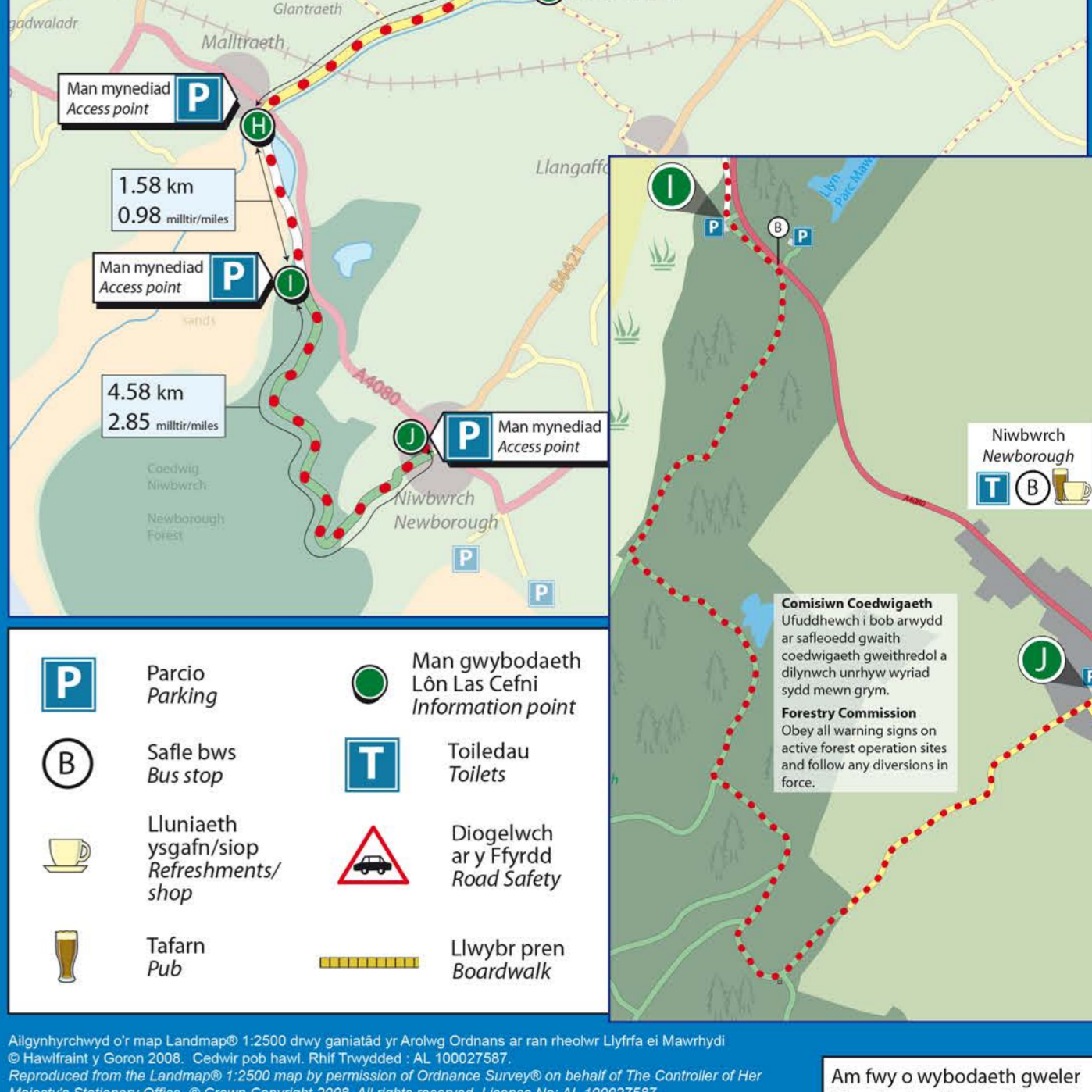
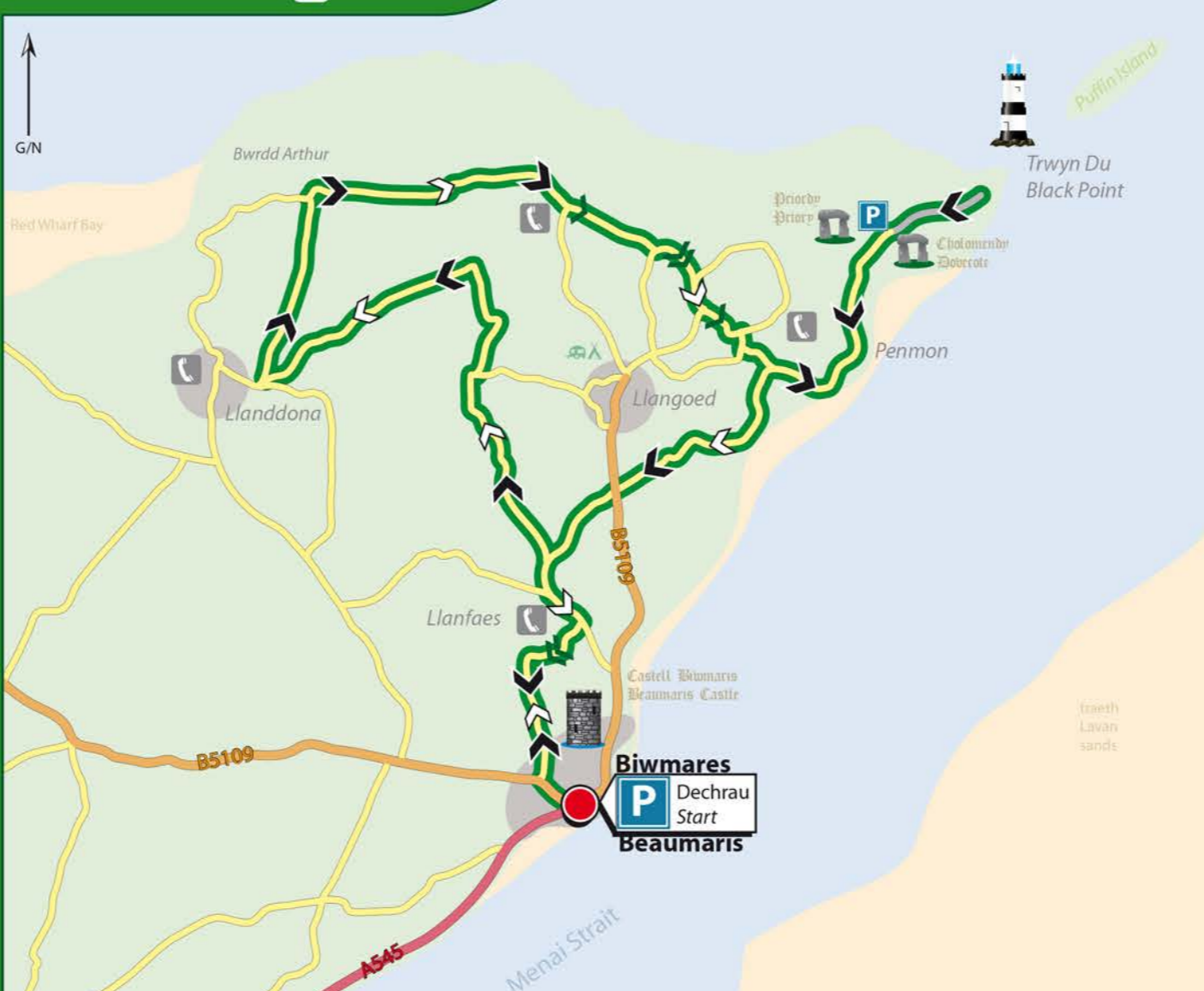
GIACH 2

TAITH/TOUR



TELOR 4

TAITH/TOUR



ALLWEDD/KEY

- dechrau/diwedd Taith Wledig Rural Tours start/finish
- Taith Fer • Short Tour
- Prif Daith • Main Tour
- Allt serth i fyny • steep hill up
- Allt serth i lawr • steep hill down

Ffordd feicio Genedlaethol 5 National cycle route 5

Ffordd feicio Genedlaethol 8 National cycle route 8

Lôn Las Cefni

Ffordd breifat gyda chaniatâd i feicwyr Private road with permission for cyclists

Ffordd ddeuol • dual carriageway

Ffordd "A" road

Man gwybodaeth Lôn Las Cefni Information point

Toileddau Toilets

Diogelwch ar y Ffyrdd Road Safety

Llwybr pren Boardwalk

Ffordd "B" road

Isffordd • minor road

Mynediad Comisiwn Coedwigaeth Forestry Commission access

Oddi ar y ffordd • off Road

Am fwy o wybodaeth gweler Map Arolwg Ordnans® Landranger 114, Môn

For more detail of routes see Ordnance Survey Map® Landranger 114, Anglesey

Allgynhyrwyd o'r map Landmap® 1:2500 drwy ganiatâd yr Arolwg Ordnans ar ran rheolwr Llyfrfa ei Mawrhydi © Hawffraint y Goron 2008. Cedwir pob hawl. Rhif Trwydded : AL 100027587. Reproduced from the Landmap® 1:2500 map by permission of Ordnance Survey® on behalf of The Controller of Her Majesty's Stationery Office, © Crown Copyright 2008. All rights reserved. Licence No: AL 100027587.